

5TH ANNUAL CHARITY FISHING CONTEST

5TH - 7TH FEBRUARY 2021

RULE BOOK



CONTENTS

1. Rules	3
2. Contest Map	10
3. Briefing	11
4. Prizes	12
5. Limits	20
6. Timetable	21
7. Auction	21
8. Sponsorship	22
9. Heartkids	23

RULES

1. All contestants must be paid up competitors (no passengers). No fishing substitution will be allowed.
2. Rods and hand-lines ONLY are to be used. No set lines, kontikis, longlines, droppers, nets or any other method is allowed.
Any rig with more than 3 hooks is ruled as a long line/set line and is therefore banned.
3. Water Contest fishing grounds: The northern boundary is a straight line from just north of Kapiti island to co-ordinates S40°652 E174°831. The southern boundary is a straight line from Cape Palliser to co-ordinates S41°671 E174°390. The western boundary is to co-ordinates S41°323 E174°385. Excluding all marine reserves.

Land Contest fishing grounds are set at just north of Kapiti Island to Cape Paliser as designated in the contest map.

4. The Boating Competition starts at 5:00am and finishes 3:00pm on both Saturday and Sunday.

The Land Competition will start at 5:00am on Saturday the 8th of February and conclude at 3:00pm on Sunday the 9th of February. Land Competitors will be able to fish through the night.

The weigh station closes at 5:30pm. Closing time is FINAL. Starting and finishing times can be changed at the organizer's discretion for whatever reason.

5. All fish submitted for weighing in must be entire – no gutting except for Kahawai which must be bled. All tags to be worn/ carried by each individual angler and displayed at fish weigh-in.
6. Prizes will be awarded for the following species: - Snapper, Kingfish, Groper, Terakihi, Blue Cod, Trevally and Gurnard for the Water based Contest and Kingfish, Moki, Snapper, Kahawai, Gurnard, Trevally and Blue Cod for the Land Based Contest.
7. In the event of a tie, the first fish submitted will be the winner. All fish submitted for weighing will become the property of the Petone Working Men's Club and will be auctioned on both days soon after the final measuring.
8. Any angler that has fish taken by MPI or not complying with MFish regulations or daily bag limits will result in automatic disqualification from the competition and all prizes.

Any vessel where an angler has been disqualified will result in the whole vessel being disqualified.
9. Prize giving will take place on the final day of fishing after the conclusion of the fish auction.
10. Prizes cannot be redeemed for cash under any circumstances. All prizes must be claimed within ONE month of prize giving or on terms set out by the Sponsors.
11. Any cancellation will be posted on the Contests facebook page: <https://www.facebook.com/CharityFishing> or Gordon can be contacted on 027 318 1959 as a last resort.

Cancellation of either day is at the organizers discretion, no correspondence shall be entered into

If fishing is canceled on any day, then the Lay Day will be used instead. The Lay day will be Monday the 8th of February and will follow the same format as the Sunday.

If both Saturday and Sunday are unsuitable for fishing and the Monday Lay Day cannot be used then the prizegiving will be held on Monday the 8th of February at 6:00pm and all prizes shall be given away as lucky anglers.

12. Any angler entering that is under the age of 14 as of 1st of February 2021 will be entered into the child category of the respective contest entered. No exceptions.
13. **SAFETY**
 - a. All vessels must carry 2 forms of operational mobile communication, VHF Radio (hand-held VHF is okay) and cellphone. One approved Life Jacket per person and one current hand-held flare, and/or 406mhz EPIRB.
No exceptions – this is a competition requirement.
 - b. All vessels in the contest must monitor CH 14 repeater, (owned by the Wellington Coastguard and the Mana Coastguard). CH2
 - c. (04) 568 5404 or 027 318 1959 - Competition HQ - can be used as a last resort if radio contact fails.
 - d. Distress safety calling channel in the first instance is CH 16.
Failing that CH 62 or CH 71
 - e. All vessels must be operationally compliant

f. In addition to the mandatory equipment stated above, it is strongly recommended that the following items are carried on each vessel:

- More than 1 working Mobile Phone (Boats)
- Working Navigation lights
- First Aid Kit
- Anchor and Warp
- Bilge pump
- Bucket
- Paddle(s)
- Compass
- Knife
- Fire Extinguisher
- Spare fuel
- Torch
- Emergency tool kit

g. Always take care on rocks and dangerous surfaces.

Special thanks to the Wellington & Mana Coastguard for the use of their repeater. Please remember Coastguard has priority over this channel.

14. Anglers will be scrutinized at the Club's discretion.
15. Any abuse of officials/helpers will result in disqualification from the competition.

Boating and other water sports can be dangerous and life threatening activities. Skippers are responsible for ensuring the safety of their own boats, crew and boating equipment. All entrants and boat owners participate at their own risk.

The Petone Working Men's Club, its partners, its employees, officers, sponsors and volunteers (together "the organizers") accept no responsibility in any respect for personal injury, loss or damage to property arising out of or in connection with the Competition, regardless of cause. Each entrant releases the organizers to the fullest extent permitted by law from all claims or demands of any kind and from all liability which may arise in respect of any incident associated with the Competition. Each entrant also agrees not to bring any action, claim or demand against the organizers in respect of the Competition and agrees to indemnify the organizers for all costs, claims, demands, expenses (including full legal expenses) arising in respect of their participation in the Competition.

Scrutineering of anglers by the organizers is not to be taken as an endorsement as to the safety of said angler, their equipment or the experience of their crew.

The holding of the Competition does not constitute an endorsement by the organizers that the weathers or sea conditions are suitable for the boats and/or entrants.

The Competition is held in the spirit of amateur fishing and fair competition. If, in the opinion of the 5th Annual Charity Fishing Contest Committee, competitors have breached the spirit of the Competition the Committee reserves the right to exclude competitor(s). The Committee's decision is final.



Please take care in shipping lanes and Cable Bay

LAND CONTEST RULES

These rules are in addition to the standard rules and will supercede them if a conflict arises.

1. Land Contest fishing grounds are set at just north of Kapiti Island to Cape Paliser as designated in the contest map.
2. The Land Competition will start at 5:00am on Saturday the 6th of February and conclude at 3:00pm on Sunday the 7th of February. Land Competitors will be able to fish through the night.

All fish must be entered into the contest by 5:00pm on Sunday the 7th of February unless the Lay day is being used. In that event all fish must be entered into the contest by 5:00pm on Monday the 8th of February

3. 2 Rod maximum per angler with a maximum of 3 hooks per rod.
4. All fish are to be put on salt ice asap to ensure best quality when entered.
5. All fish caught will need to be photographed as per the the measuring mat requirements on the following page.

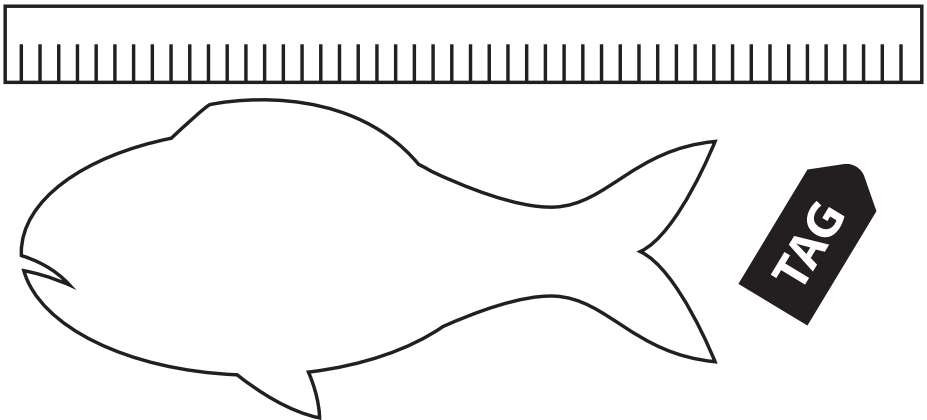
Measuring mats will be supplied by the contest organisers.

Any fish caught that have not been photographed and sent to the contest organisers will not be eligible for entry into the contest.

MEASURING MAT REQUIREMENTS

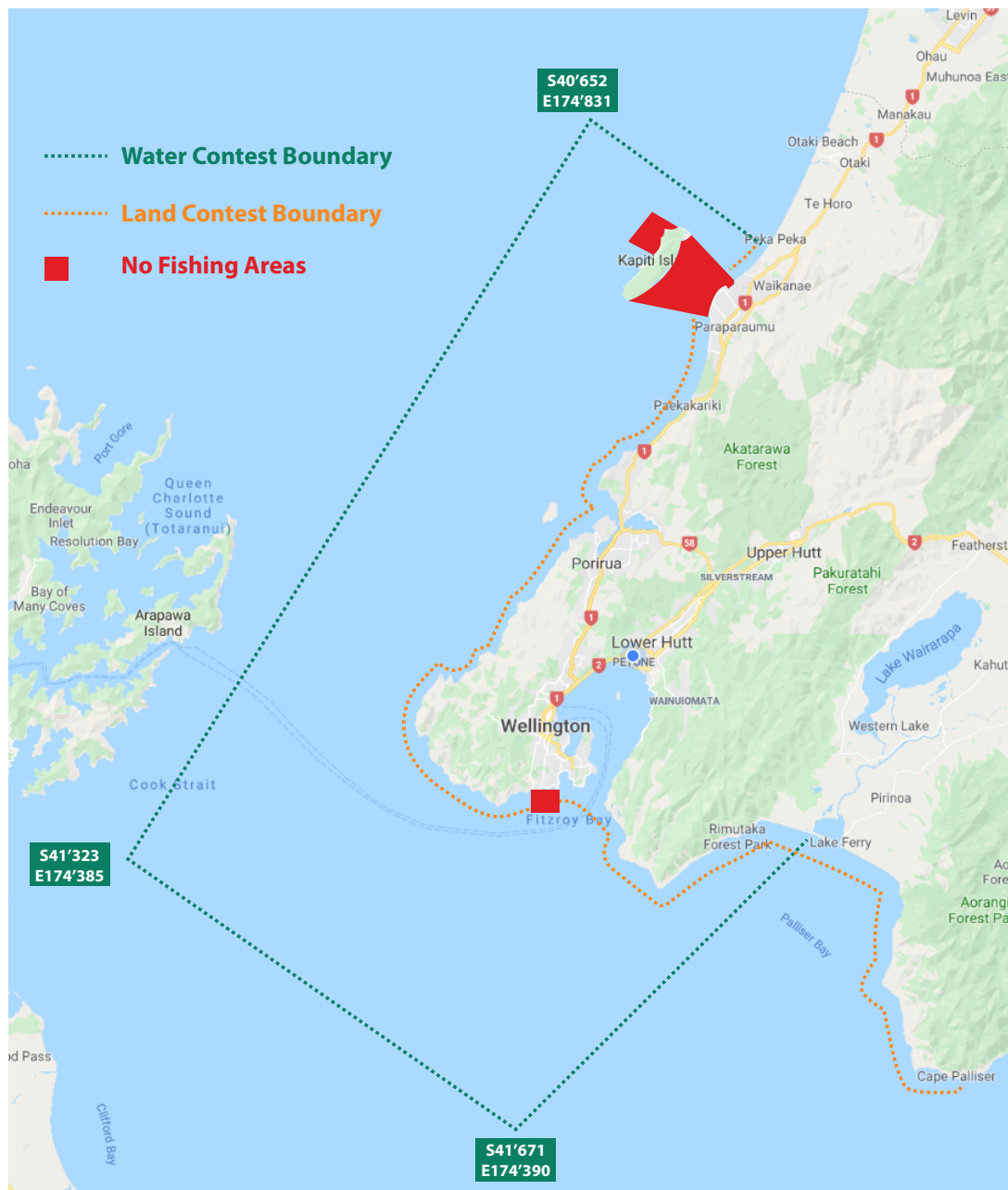
All fish entered into the Land contest will need to be photographed and sent to us. This is to ensure that the fish has been well taken care of and will be in good condition for auction.

1. Place your fish alongside the measuring mat.
2. Place your contest tag next to the fish.
3. Photograph the fish on your mobile phone. If you can time stamp the photo then it will help. If you can't timestamp the photo then please tell us what time the fish was caught in your text or email.
4. Send the photo to us either by text to 021 504067 or email at entries@charityfishing.co.nz



Any mobile or data charges are the responsibility of the entrant.

CONTEST MAP



BRIEFING

Competitors will be required to attend the briefing at the Petone Working Men's Club on Friday 5th February 2021, commencing 7:00pm sharp. For those not yet registered, registrations will be accepted between 6:00pm and 8:00pm - (No cheque's accepted)

Registrations will pause while the briefing is underway.

PRIZES

There are plenty of great prizes on offer kindly provided by Hunting & Fishing and our sponsors.

Water Based Contest prizes

1st and 2nd Prize shall be awarded to the heaviest fish in each category.

3rd prize for each category will be awarded to the angler who has the closest average weight to the overall average weight achieved by all anglers in that category.

Note: The 1st and 2nd prize winners catch for that category shall be excluded.

In the event of a tie, the first fish submitted will be the winner.

“Most Species” entered prize – to be awarded to the fisherman with the most species of fish caught and weighed up.

(No Barry’s or sharks accepted, all of these must be returned to the sea)

Lucky Anglers shall be drawn throughout the competition,

WATER BASED CONTEST PRIZES

GROPER

1st: Shimano Beastmaster 9000 Electric Reel
Shimano Xitus Pro Bent Butt Rod 5'6" 50-80lb
Powerpro 80lb / 1090yd

Worth
\$2400

2nd: Shimano TLD 50 2 SPD Reel
Shimano Xitus Pro 5'6" 24kg Rod
Sufix 832 80lb / 600yd

Worth
\$830

3rd: Icey Tek 90ltr Chilly Bin

Worth
\$400

KINGFISH

1st: Shimano Talica 12 Reel
Shimano Energy Concept 5' PE 3-6 Rod
Shimano Kairiki Multi 80lb / 300m

Worth
\$1010

2nd: Shimano Torium 20A-PG Reel
Shimano Backbone 5'5" PE 5-8 O/H Jig
Shimano Kairiki Multi 80lb / 300m

Worth
\$610

3rd: Icey Tek 90ltr Chilly Bin

Worth
\$399

SNAPPER

1st: Shimano Talica 10 Reel
Shimano Carbolite SW 7' 10-15kg O/H Rod
Shimano Kairiki Mantis Green 50lb / 300m

Worth
\$980

2nd: Shimano Torium 20A-HG Reel
Shimano Xitus Pro 6'10" 10-15kg Rod
Shimano Kairiki Mantis Green 50lb / 300m

Worth
\$530

3rd: Icey Tek 70ltr Chilly Bin

Worth
\$380

TERAKIHI

1st: Shimano Trinidad 20A
Shimano Carbolite SW 7' 10-15kg O/H Rod
Shimano Kairiki Mantis Green 50lb / 300m

Worth
\$1120

2nd: Shimano Torium 20A-HG Reel
Shimano Xitus Pro 6'10" 10-15kg Rod
Shimano Kairiki Mantis Green 50lb / 300m

Worth
\$530

3rd: Icey Tek 55ltr Chilly Bin

Worth
\$299

TREVALLY

1st: Shimano Trinidad 20A
Shimano Carbolite SW 7' 10-15kg O/H Rod
Shimano Kairiki Mantis Green 50lb / 300m

Worth
\$1120

2nd: Shimano Torium 20A-HG Reel
Shimano Xitus Pro 6'10" 10-15kg Rod
Shimano Kairiki Mantis Green 50lb / 300m

Worth
\$530

3rd: Icey Tek 55ltr Chilly Bin

Worth
\$299

BLUE COD

1st: Shimano Trinidad 20A
Shimano Carbolite SW 7' 10-15kg O/H Rod
Shimano Kairiki Mantis Green 50lb / 300m

Worth

\$1120

2nd: Shimano Torium 20A-HG Reel
Shimano Xitus Pro 6'10" 10-15kg Rod
Shimano Kairiki Mantis Green 50lb / 300m

Worth

\$530

3rd: Icey Tek 55ltr Chilly Bin

Worth

\$299

GURNARD

1st: Shimano Trinidad 20A
Shimano Carbolite SW 7' 10-15kg O/H Rod
Shimano Kairiki Mantis Green 50lb / 300m

Worth

\$1120

2nd: Shimano Torium 20A-HG Reel
Shimano Xitus Pro 6'10" 10-15kg Rod
Shimano Kairiki Mantis Green 50lb / 300m

Worth

\$530

3rd: Icey Tek 55ltr Chilly Bin

Worth

\$299

TOP CHILD ANGLER

1st: Shimano Thunnus 6000 Ci4
Shimano Xitus Pro 6'10" 6-10kg Spin
Shimano Kairiki Mantis Green 30lb / 300m

Worth
\$620

2nd: Shimano Baitrunner 6000D Reel
Shimano Xitus Pro 6'10 6-10KG Spin Rod
Shimano Kairiki Mantis Green 30lb / 300m

Worth
\$460

3rd: Shimano Tackle Backpack
including accessories

Worth
\$279

MOST SPECIES ENTERED

1st: Coleman Event 12 Gazebo

Worth
\$399

LAND BASED CONTEST PRIZES

1st Prize shall be awarded to the heaviest fish in each category.

2nd prize for each category will be awarded to the angler who has the closest average weight to the overall average weight achieved by all anglers in that category.

Note: The 1st winners catch for that category shall be excluded.

In the event of a tie, the first fish submitted will be the winner.

“Most Species” entered prize – to be awarded to the fisherman with the most species of fish caught and weighed up.
(No Barry’s or sharks accepted,all of these must be returned to the sea)

KINGFISH

1st: Shimano Ultegra CI4 14000 XTC Reel
Shimano Carbolite SW 14’ 10/15kg 3pce Rod
Shimano Technium Mono Line 11.5kg 300m

Worth
\$1020

2nd: Icey Tek 70ltr Chilly Bin

Worth
\$380

MOKI

1st: Shimano Big BTR Long cast XTB LC Reel
Shimano Shadow X 15’ 10/15kg Rod
Shimano Technium Mono Line 11.5kg 300m

Worth
\$730

2nd: Icey Tek 70ltr Chilly Bin

Worth
\$380

SNAPPER

1st: Shimano Big BTR Long cast XTB LC Reel
Shimano Shadow X 15' 10/15kg Rod
Shimano Technium Mono Line 11.5kg 300m

Worth
\$730

2nd: Icey Tek 70ltr Chilly Bin

Worth
\$380

KAHAWAI

1st: Shimano Big BTR Long cast XTB LC Reel
Shimano Shadow X 15' 10/15kg Rod
Shimano Technium Mono Line 11.5kg 300m

Worth
\$730

2nd: Icey Tek 70ltr Chilly Bin

Worth
\$380

GURNARD

1st: Shimano Big BTR Long cast XTB LC Reel
Shimano Shadow X 15' 10/15kg Rod
Shimano Technium Mono Line 11.5kg 300m

Worth
\$730

2nd: Icey Tek 70ltr Chilly Bin

Worth
\$380

TREVALLY

1st: Shimano Big BTR Long cast XTB LC Reel
Shimano Shadow X 15' 10/15kg Rod
Shimano Technium Mono Line 11.5kg 300m

Worth
\$730

2nd: Icey Tek 70ltr Chilly Bin

Worth
\$380

BLUE COD

1st: Shimano Big BTR Long cast XTB LC Reel
Shimano Shadow X 15' 10/15kg Rod
Shimano Technium Mono Line 11.5kg 300m

Worth
\$730

2nd: Icey Tek 70ltr Chilly Bin

Worth
\$380

TOP CHILD ANGLER

1st: Shimano Speedmaster 14000 XSC Reel
Shimano Carbolite SW 13'6" Rod
Shimano Technium Mono Line 11.5kg 300m

Worth
\$670

2nd: Shimano Speedmaster 14000 XSC Reel
Shimano Xitus Pro 13'6" Rod
Shimano Technium Mono Line 11.5kg 300m

Worth
\$420

3rd: Shimano Tackle Backpack
including accessories

Worth
\$279

MOST SPECIES ENTERED

1st: Coleman Event 12 Gazebo

Worth
\$399

LIMITS

Please note as per MPI's regulations there is a bag limit of 20 fish per day. Please use the following table for more information about limits on number and size for each category.

Category	Limit per day	Minimum fish length
Groper	5	
Kingfish *	3	75cm
Snapper *	10	27cm
Terakihi	10	25cm
Blue Cod *	10	33cm
Gurnard *	10	25cm
Trevally *	10	25cm
Moki *	5	40cm
Kahawai *	5	-

* Water and Land Based categories.

TIMETABLE

FRIDAY 5th FEBRUARY

Briefing: 7:00pm
Registrations open between
6:00pm and 8:00pm.

SATURDAY 6th FEBRUARY

Fishing: 5:00am to 3:00pm
Weigh in: 3:30pm to 5:30pm
Filleting from 5:00pm
Auction: 4:00pm

SUNDAY 7th FEBRUARY

Fishing: 5:00am to 3:00pm
Weigh in: 3:30pm to 5:30pm
Auction: 4:00pm
Prizegiving: from 6:00pm

MONDAY 8th FEBRUARY IF REQUIRED

Fishing: 5:00am to 3:00pm
Weigh in: 3:30pm to 5:30pm
Auction: 4:00pm
Prizegiving: from 6:00pm

Times may change at the discretion of the organizer

AUCTION

From 4:00pm on both Saturday the 6th and Sunday the 7th a Fish Auction shall be held where fish caught during the day are auctioned off.

It is illegal to buy, sell or swap recreationally caught seafood.
All fish bought will need to be paid and signed for on the day.

SPONSORSHIP

Each year we have a raft of top sponsors come on board to support the contest.

If you're interested in helping out with either cash sponsorship or sponsorship in kind, then get a hold of us. We will display your logo on this website, our facebook page and the internal advertising screens here at the Petone Club, so you will get a wide range of exposure. There are also options to have your business displayed on the weekend of the contest as well.

To find out more either email us on sponsorship@charityfishing.co.nz



We give personalised support to each family through a one-to-one connection. We help with the big things like emotional, social and practical support. But also the little things they have probably never even thought about.

Below are just some of the ways we support families while they're going through an incredibly stressful time:

A dedicated Family Support Coordinator to provide strength in times of doubt, comfort in times of sadness and celebrate times of joy

Wellbeing Packs this pack contains items that support parents wellbeing

Travel Assistance for the cumulative parking, petrol and travel costs for hospital visits

Holiday Homes in Taupo and Arrowtown - allowing families to enjoy a break and create new precious memories

Personal Development Grants for children with cancer, their siblings or parents

Household Support with essential living costs that families may struggle with during this difficult time

Support in the Community such as camps, events and activities for children and their families

Family Places in Auckland, Wellington, Christchurch and Dunedin, all within walking distance of the local hospital

