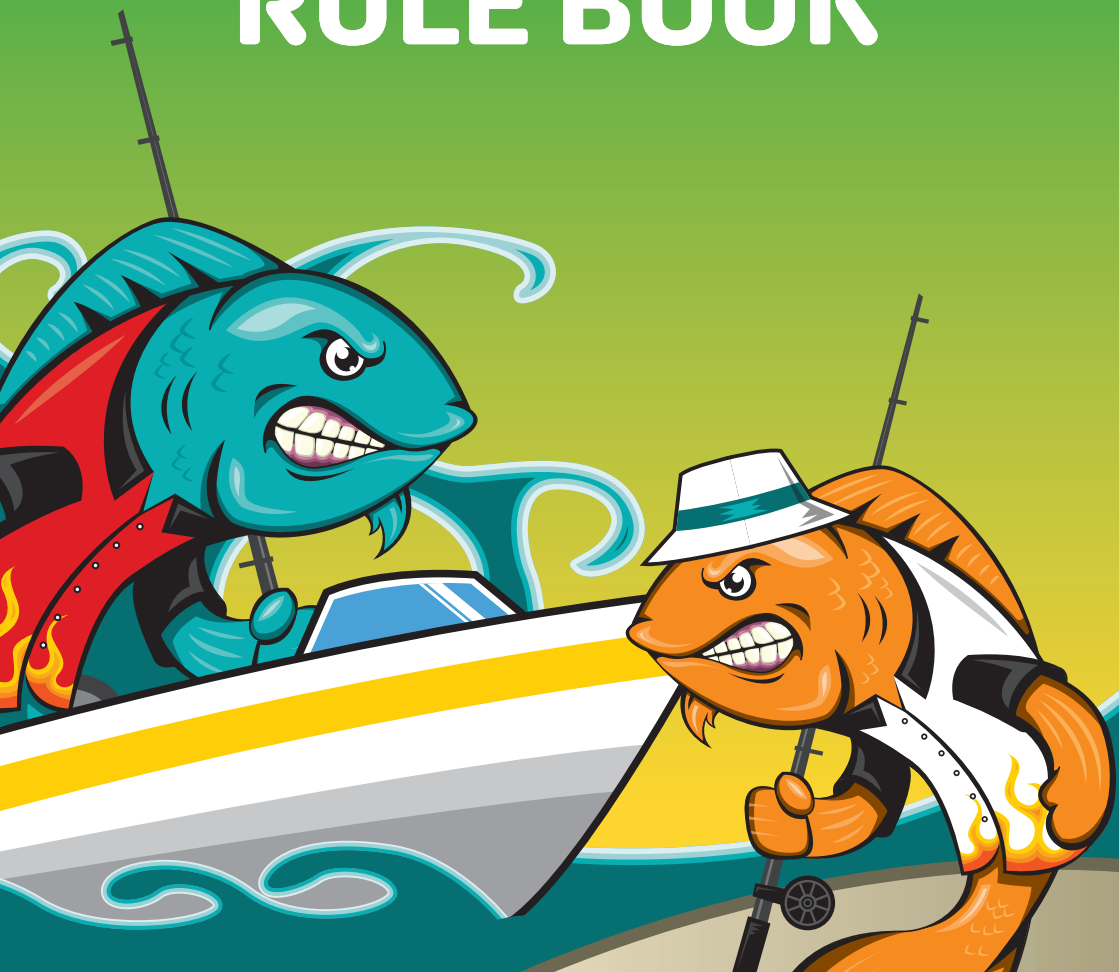


**THE PETONE**  
**CHARITY**  
**FISHING**  
**COMPETITION**

02-04 FEBRUARY 2024

**RULE BOOK**



# RULES

---

1. All contestants must be paid up competitors (no passengers). No fishing substitution will be allowed.
2. Rods and hand-lines ONLY are to be used. No set lines, kontikis, longlines, droppers, nets or any other method is allowed.  
Any rig with more than 3 hooks is ruled as a long line/set line and is therefore banned.

3. Water Competition Fishing area is from the north end of the Otaki River mouth around to the eastern tip of the Te Awaiti River mouth. The Coordinates are as so

North boundary - Otaki River mouth

40°45.604"S - 175°6.045"E out to 40°40.282"S - 174°54.530"E

Western Bounday - Cook Strait

41°21.355"S - 174°20.179"E

Southern Boundary - Cook Strait

41°46.419"S - 175°18.177"E

Eastern Bounry - Te Awaiti River Mouth

41°29.376"S - 175°34.536"E out to 41°32.315"S - 175°37.862"E

Land Compeition fishing grounds are set from the north end of the Otaki River Mouth to the Eastern Tip of the Te Awaiti River mouth.

4. The Water Competition starts at 5:00am and finishes 3:00pm on both Saturday the 3rd and Sunday the 4th of February.

The Land Competition will start at 5:00am on Saturday the 3rd of February and conclude at 3:00pm on Sunday the 4th of February. Land Competitors will be able to fish through the night.

The weigh station closes at 5:30pm. Closing time is FINAL. Starting and finishing times can be changed at the organizer's discretion for whatever reason.

5. All fish submitted for weighing in must be entire – no gutting except for Kingfish, Kahawai and Tuna which must be bled. All tags to be worn/carried by each individual angler and displayed at fish weigh-in.
6. Prizes will be awarded for the following species: - Snapper, Kingfish, Groper, Terakihi, Blue Cod, Trevally, Gurnard and Tuna for the Water Competition and Kingfish, Moki, Snapper, Kahawai, Gurnard, Trevally and Blue Cod for the Land Competition.
7. In the event of a tie, the first fish submitted will be the winner. All fish submitted for weighing will become the property of the Petone Working Men's Club and will be auctioned on both days soon after the final measuring.
8. Any angler that has fish taken by MPI or not complying with MFish regulations or daily bag limits will result in automatic disqualification from the competition and all prizes.

Any vessel where an angler has been disqualified will result in the whole vessel being disqualified.

**Cancellation of either day is at the organizers discretion, no correspondence shall be entered into**

9. Prize giving will take place on the final day of fishing after the conclusion of the fish auction.
10. Prizes cannot be redeemed for cash under any circumstances. All prizes must be claimed within ONE month of prize giving or on terms set out by the Organisers.
11. Any cancellation will be posted on the Petone Charity Fishing Competitions facebook page: <https://www.facebook.com/CharityFishing> or Gordon can be contacted on 027 318 1959 as a last resort.

If both Saturday and Sunday are unsuitable for fishing then the prizegiving will be held on Sunday the 4th of February at 6:00pm and all prizes shall be given away as lucky anglers.

12. Any angler entering that is under the age of 14 as of 1st of February 2024 will be entered into the Junior category of the respective competition entered. No exceptions.

13. **SAFETY**

a. All vessels must carry 2 forms of operational mobile communication, VHF Radio (hand-held VHF is okay) and cellphone. One approved Life Jacket per person and one current hand-held flare, and/or 406mhz EPIRB.

No exceptions – this is a competition requirement.

b. All vessels in the competition must monitor CH 14 repeater. CH2

c. (04) 568 5404 or 027 318 1959 - Competition HQ - can be used as a last resort if radio contact fails.

d. Distress safety calling channel in the first instance is CH 16.

Failing that CH 62 or CH 71

e. All vessels must be operationally compliant

f. In addition to the mandatory equipment stated above, it is strongly recommended that the following items are carried on each vessel:

- More than 1 working Mobile Phone (Boats)
- Working Navigation lights
- First Aid Kit
- Anchor and Warp
- Bilge pump
- Bucket
- Paddle(s)
- Compass
- Knife
- Fire Extinguisher
- Spare fuel
- Torch
- Emergency tool kit

g. Always take care on rocks and dangerous surfaces.

Special thanks to the Wellington & Mana Coastguard for the use of their repeater. Please remember Coastguard has priority over this channel.

14. Anglers will be scrutinized at the Club's discretion.

15. Any abuse of officials/helpers will result in disqualification from the competition.

Boating and other water sports can be dangerous and life threatening activities. Skippers are responsible for ensuring the safety of their own boats, crew and boating equipment. All entrants and boat owners participate at their own risk.

The Petone Working Men's Club, its partners, its employees, officers, sponsors and volunteers (together "the organizers") accept no responsibility in any respect for personal injury, loss or damage to property arising out of or in connection with the Competition, regardless of cause. Each entrant releases the organizers to the fullest extent permitted by law from all claims or demands of any kind and from all liability which may arise in respect of any incident associated with the Competition. Each entrant also agrees not to bring any action, claim or demand against the organizers in respect of the Competition and agrees to indemnify the organizers for all costs, claims, demands, expenses (including full legal expenses) arising in respect of their participation in the Competition.

Scrutineering of anglers by the organizers is not to be taken as an endorsement as to the safety of said angler, their equipment or the experience of their crew.

The holding of the Competition does not constitute an endorsement by the organizers that the weathers or sea conditions are suitable for the boats and/or entrants.

The Competition is held in the spirit of amateur fishing and fair competition. If, in the opinion of the Petone Charity Fishing Competition Committee, competitors have breached the spirit of the Competition the Committee reserves the right to exclude competitor(s). The Committee's decision is final.

## 16. **Prizepool**

The organisers reserve the right to alter or reduce the value of the prize pool due to any event out of control of the organizers (Force Majeure) whether in respect to supply of prizes or otherwise.

## 17. **Disputes**

Any competitor that wishes to dispute the results of the contest must do so within 7 days of the competitions completion.

To do so, the competitor must fill out a Dispute form supplied by the competition and return it to the Petone Club either via hand delivery or via email to [entries@charityfishing.co.nz](mailto:entries@charityfishing.co.nz) with in the 7 days (Sunday 11th February 2024)

The dispute will be investigated and if found to be upheld then the competition will aim to rectify the situation to the best of its ability.

## 18. **Lucky Angler Prizes**

We give away several Lucky Angler prizes on Friday 2nd February and Sunday 4th February. To win a prize then the winner must be entered into the contest and at the Petone Club when the prize is drawn. The winner must be the person to collect the prize.

If a winner is drawn but is not at the Petone Club and/or does not claim their prize then their number will be removed from the draw.

Lucky Angler prizes will be given away on Friday and Sunday.

Alterations to these conditions is at the Organisers discretion.

# LAND COMPETITION RULES

These rules are in addition to the standard rules and will supercede them if a conflict arises.

1. Land Competition fishing grounds are set at just north of Kapiti Island to Cape Paliser as designated in the contest map.
2. The Land Competition will start at 5:00am on Saturday the 3rd of February and conclude at 3:00pm on Sunday the 4th of February. Land Competitors will be able to fish through the night.

All fish must be entered into the contest by 5:00pm on Sunday the 4th of February.

3. 2 Rod maximum per angler with a maximum of 3 hooks per rod.
4. All fish are to be put on salt ice asap to ensure best quality when entered.
5. All fish caught will need to be photographed as per the the measuring mat requirements on the following page.

Measuring mats will be supplied by the contest organisers.

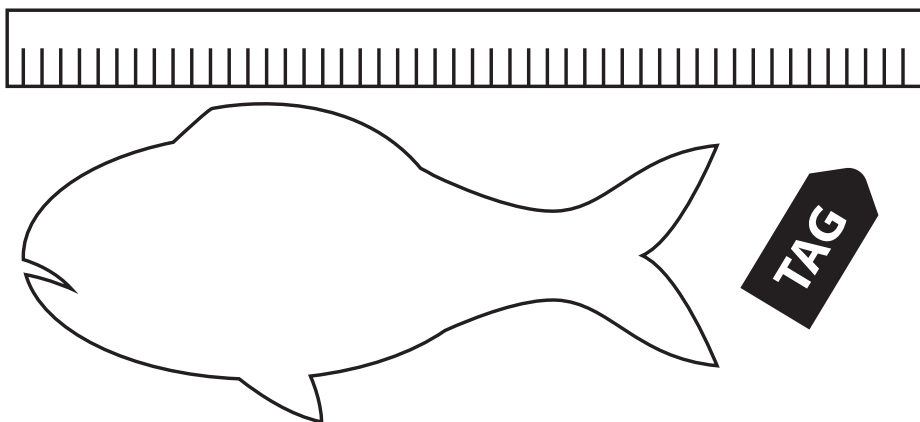
Any fish caught that have not been photographed and sent to the contest organisers will not be eligible for entry into the contest.



# MEASURING MAT REQUIREMENTS

All fish entered into the Land Competition will need to be photographed and sent to us. This is to ensure that the fish has been well taken care of and will be in good condition for auction.

1. Place your fish alongside the measuring mat.
2. Place your contest tag next to the fish.
3. Photograph the fish on your mobile phone. If you can time stamp the photo then it will help. If you can't timestamp the photo then please tell us what time the fish was caught in your text or email.
4. Send the photo to us either by text to 021 504067 or email at [entries@charityfishing.co.nz](mailto:entries@charityfishing.co.nz)



Any mobile or data charges are the responsibility of the entrant.

# WATER COMPETITION PRIZES

## GROPER

### First

Forcemaster 9000 Electric Reel  
Xitus Pro 5'6" 50-80lb 2 Piece Rod  
Power Pro Spectra 80lb Braid

Valued at

**\$2360**

### Second

TLD 50A Two Speed Reel  
Xitus Pro 5'6" 1 Piece 15/24kg Rod  
Power Pro Spectra Braid

Valued at

**\$880**

### Third

90L Icey-Tek Chilly Bin

Valued at

**\$500**

## KINGFISH

### First

Talica 12 Reel  
Shadow X 5'6" 1 Piece O/H Jig Rod  
Kairiki 8 Multi 80lb Braid

Valued at

**\$1060**

### Second

Torium 20PG Reel  
Xitus Pro 5'5" 1 Piece O/H Jig Rod  
Kairiki 8 Multi 80lb Braid

Valued at

**\$660**

### Third

90L Icey-Tek Chilly Bin

Valued at

**\$500**

## SNAPPER

### First

Talica 10 Reel  
Carbolite 7' 2 Piece O/H 10-15kg Rod  
Kairiki 8 50lb Braid

Valued at

**\$1100**

### Second

Torium 20HG Reel  
Shadow X 6'3"1 Piece 10-15kg O/H Rod  
Kairiki 8 50lb Braid

Valued at

**\$670**

### Third

70L Icey-Tek Chilly Bin

Valued at

**\$400**

## TERAKIHI

### First

Trinidad 16 Reel  
Carbolite 7'2 Piece O/H 10-15kg Rod  
Kairiki 8 50lb Braid

Valued at

**\$1200**

### Second

Torium 16HG Reel  
Kaos 7' 1 Piece O/H 6-10kg Rod  
Kairiki 8 50lb Braid

Valued at

**\$720**

### Third

55L Icey-Tek Chilly Bin

Valued at

**\$330**

## TREVALLY

### First

Trinidad 16 Reel  
Carbolite 7'2 Piece O/H 10-15kg Rod  
Kairiki 8 50lb Braid

Valued at  
**\$1200**

### Second

Torium 16HG Reel  
Kaos 7' 1 Piece O/H 6-10kg Rod  
Kairiki 8 50lb Braid

Valued at  
**\$720**

### Third

55L Icey-Tek Chilly Bin

Valued at  
**\$330**

## BLUE COD

### First

Trinidad 16 Reel  
Carbolite 7'2 Piece O/H 10-15kg Rod  
Kairiki 8 50lb Braid

Valued at  
**\$1200**

### Second

Torium 16HG Reel  
Kaos 7' 1 Piece O/H 6-10kg Rod  
Kairiki 8 50lb Braid

Valued at  
**\$720**

### Third

55L Icey-Tek Chilly Bin

Valued at  
**\$330**

## GURNARD

### First

Trinidad 16 Reel  
Carbolite 7'2 Piece O/H 10-15kg Rod  
Kairiki 8 50lb Braid

Valued at

**\$1200**

### Second

Torium 16HG Reel  
Kaos 7' 1 Piece O/H 6-10kg Rod  
Kairiki 8 50lb Braid

Valued at

**\$720**

### Third

55L Icey-Tek Chilly Bin

Valued at

**\$330**

## TUNA

### First

Talica 16 Reel  
Xitus Pro 5'7" 2 Piece Deep Drop 50lb Rod  
Kairiki 8 80lb Braid

Valued at

**\$1200**

### Second

Speedmaster 16 Two Speed Reel  
Backbone 5'7" 1 Piece 15kg R/T Game Rod  
Kairiki 8 50lb Braid

Valued at

**\$720**

### Third

55L Icey-Tek Chilly Bin

Valued at

**\$330**

## TOP CHILD ANGLER

### First

Thunnus CI4 6000 Spin Reel  
Xitus Pro 6'10" 1 Piece 6-10kg Spin Rod  
Kairiki 8 30lb Braid

Valued at  
**\$690**

### Second

Baitrunner 6000D Spin Reel  
Xitus Pro 6'10" 1 Piece 6-10kg Spin Rod  
Kairiki 8 30lb Braid

Valued at  
**\$510**

### Third

Shimano Tackle Bag

Valued at  
**\$140**

## MOST SPECIES ENTERED

Coleman Event 12 Fast Pitch Gazebo

Valued at  
**\$450**

# LAND COMPETITION PRIZES

## KINGFISH

### First

Ultegra Ci4 14000 XTC Surf Reel  
Carbolite 14'6" 3 Piece 10-15kg Surf Rod  
Technium 0.305mm 8.5kg 200m TEC30030PB

Valued at  
**\$1125**

### Second

70L Icey-Tek Chilly Bin

Valued at  
**\$400**

## MOKI

### First

Big Baitrunner 14000 XT LC Surf Reel  
Shadow X 15" 3 Piece 10-15kg Surf Rod  
Technium 0.305mm 8.5kg 200m TEC30030PB

Valued at  
**\$805**

### Second

70L Icey-Tek Chilly Bin

Valued at  
**\$400**

## SNAPPER

### First

Big Baitrunner 14000 XT LC Surf Reel  
Shadow X 15" 3 Piece 10-15kg Surf Rod  
Technium 0.305mm 8.5kg 200m TEC30030PB

Valued at  
**\$805**

### Second

70L Icey-Tek Chilly Bin

Valued at  
**\$400**

## KAHAWAI

### First

Big Baitrunner 14000 XT LC Surf Reel  
Shadow X 15" 3 Piece 10-15kg Surf Rod  
Technium 0.305mm 8.5kg 200m TEC30030PB

Valued at  
**\$805**

### Second

70L Icey-Tek Chilly Bin

Valued at  
**\$400**

## GURNARD

### First

Big Baitrunner 14000 XT LC Surf Reel  
Shadow X 15" 3 Piece 10-15kg Surf Rod  
Technium 0.305mm 8.5kg 200m TEC30030PB

Valued at  
**\$805**

### Second

70L Icey-Tek Chilly Bin

Valued at  
**\$400**

## TREVALLY

### First

Big Baitrunner 14000 XT LC Surf Reel  
Shadow X 15" 3 Piece 10-15kg Surf Rod  
Technium 0.305mm 8.5kg 200m TEC30030PB

Valued at  
**\$805**

### Second

70L Icey-Tek Chilly Bin

Valued at  
**\$400**



## BLUE COD

### First

Big Baitrunner 14000 XT LC Surf Reel  
Shadow X 15" 3 Piece 10-15kg Surf Rod  
Technium 0.305mm 8.5kg 200m TEC30030PB

Valued at  
**\$805**

### Second

70L Icey-Tek Chilly Bin

Valued at  
**\$400**

## TOP CHILD ANGLER

### First

Speedmaster 14000 XSD Surf Reel  
Carbolite 13'6"3 Piece 10-15kg Surf Rod  
Technium 0.305mm 8.5kg 200m TEC30030PB

Valued at  
**\$755**

### Second

Speedmaster 14000 XSD Surf Reel  
Xitus Pro 13'6"3 Piece 6-12kg Surf Rod  
Technium 0.305mm 8.5kg 200m TEC30030PB

Valued at  
**\$515**

### Third

Shimano Tackle Bag

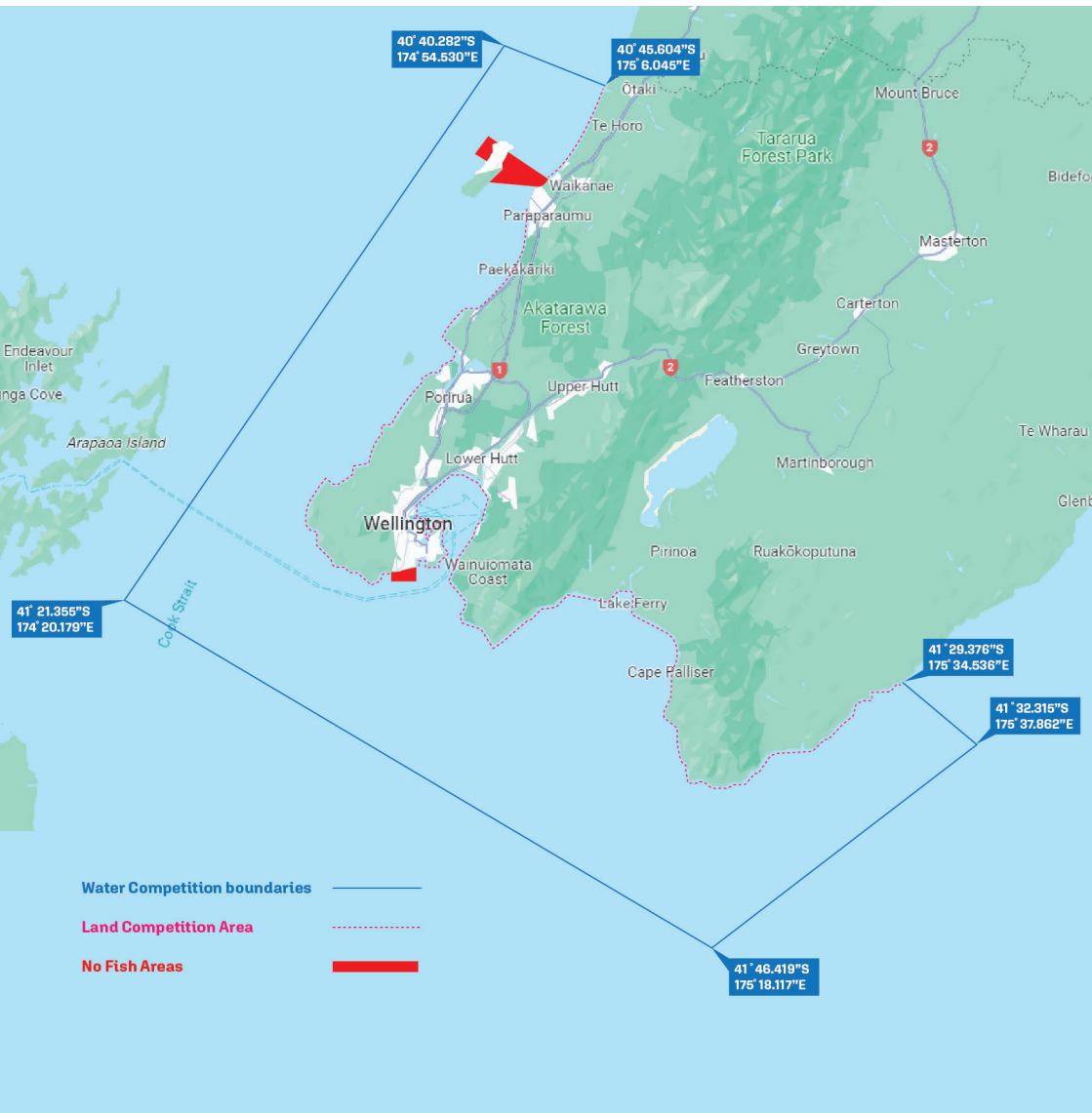
Valued at  
**\$140**

## MOST SPECIES ENTERED

Coleman Event 12 Fast Pitch Gazebo

Valued at  
**\$450**

# CONTEST MAP



North boundary - Otaki River mouth

40°45.604"S - 175°6.045"E out to 40°40.282"S - 174°54.530"E

Western Bounday - Cook Strait

41°21.355"S - 174°20.179"E

Southern Boundary - Cook Strait

41°46.419"S - 175°18.177"E

Eastern Bounry - Te Awaiti River Mouth

41°29.376"S - 175°34.536"E out to 41°32.315"S - 175°37.862"E

## BRIEFING

---

Competitors will be required to attend the briefing at the Petone Working Men's Club on Friday 2nd February 2024, commencing 7:00pm sharp. For those not yet registered, registrations will be accepted between 6:00pm and 8:00pm

Registrations will pause while the briefing is underway.

# LIMITS

Please note as per MPI's regulations there is a bag limit of 20 fish per day. Please use the following table for more information about limits on number and size for each category.

Category	Limit per day	Minimum fish length
Groper	2	
Kingfish *	3	75cm
Snapper *	10	27cm
Terakihi	15	25cm
Blue Cod *	10	33cm
Gurnard *	15	25cm
Trevally *	15	25cm
Moki	5	40cm
Kahawai	5	-
Tuna	2	

\* Water and Land competitions.

# TIMETABLE

---

## FRIDAY 2nd FEBRUARY

Briefing: 7:00pm  
Registrations open between  
6:00pm and 8:00pm.

## SATURDAY 3rd FEBRUARY

Fishing: 5:00am to 3:00pm  
Weigh in: 3:30pm to 5:30pm  
Filleting from 5:00pm  
Auction: 4:00pm

## SUNDAY 4th FEBRUARY

Fishing: 5:00am to 3:00pm  
Weigh in: 3:30pm to 5:30pm  
Auction: 4:00pm  
Prizegiving: from 6:00pm

**Times may change at the discretion of the organizer**

# AUCTION

---

From 4:00pm on both Saturday the 3rd and Sunday the 4th of February a Fish Auction shall be held where fish caught during the day are auctioned off.

**It is illegal to buy, sell or swap recreationally caught seafood.**  
All fish bought will need to be paid and signed for on the day.

# SPONSORSHIP

Each year we have a raft of top sponsors come on board to support the competition.

If you're interested in helping out with either cash sponsorship or sponsorship in kind, then get a hold of us. We will display your logo on our website, our facebook page and the internal advertising screens here at the Petone Club, so you will get a wide range of exposure. There are also options to have your business displayed on the weekend of the contest as well.

To find out more either email us on [sponsorship@charityfishing.co.nz](mailto:sponsorship@charityfishing.co.nz)



We give personalised support to each family through a one-to-one connection. We help with the big things like emotional, social and practical support. But also the little things they have probably never even thought about.

Below are just some of the ways we support families while they're going through an incredibly stressful time:

A dedicated Family Support Coordinator to provide strength in times of doubt, comfort in times of sadness and celebrate times of joy

Wellbeing Packs this pack contains items that support parents wellbeing

Travel Assistance for the cumulative parking, petrol and travel costs for hospital visits

Holiday Homes in Taupo and Arrowtown - allowing families to enjoy a break and create new precious memories

Personal Development Grants for children with cancer, their siblings or parents

Household Support with essential living costs that families may struggle with during this difficult time

Support in the Community such as camps, events and activities for children and their families

Family Places in Auckland, Wellington, Christchurch and Dunedin, all within walking distance of the local hospital

