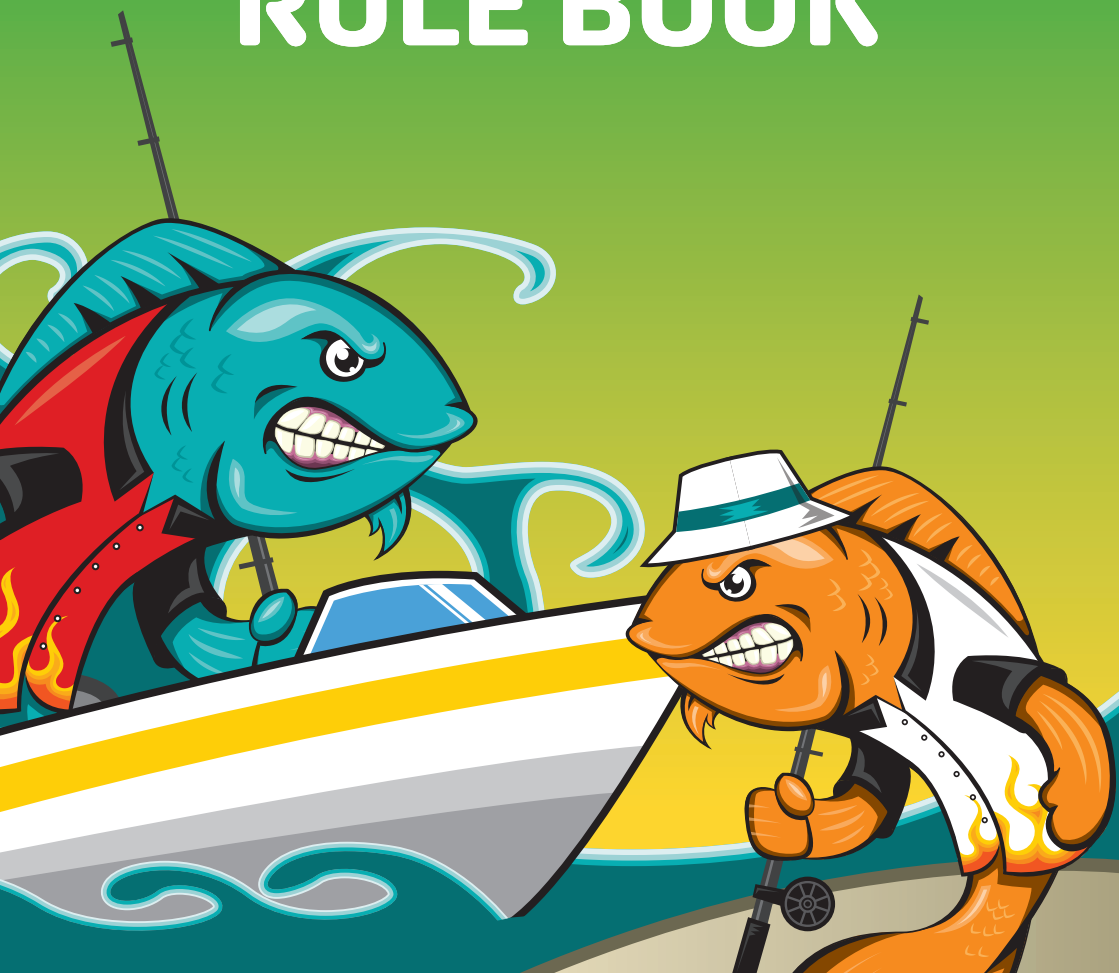


THE PETONE
CHARITY
FISHING
COMPETITION

RULE BOOK



RULES

1. All contestants must be paid up competitors (no passengers). No fishing substitution will be allowed.
2. Rods and hand-lines ONLY are to be used. No set lines, kontikis, longlines, droppers, nets or any other method is allowed.
Any rig with more than 3 hooks is ruled as a long line/set line and is therefore banned.

3. Water Competition Fishing area is from the north end of the Otaki River mouth around to the eastern tip of the Te Awaiti River mouth. The Coordinates are as so

North boundary - Otaki River mouth

40°45.604"S - 175°6.045"E out to 40°40.282"S - 174°54.530"E

Western Bounday - Cook Strait

41°21.355"S - 174°20.179"E

Southern Boundary - Cook Strait

41°46.419"S - 175°18.177"E

Eastern Bounry - Te Awaiti River Mouth

41°29.376"S - 175°34.536"E out to 41°32.315"S - 175°37.862"E

Land Compeition fishing grounds are set from the north end of the Otaki River Mouth to the Eastern Tip of the Te Awaiti River mouth.

4. The Water Competition starts at 5:00am and finishes 3:00pm on both Saturday the 7th and Sunday the 8th of February.

The Land Competition will start at 5:00am on Saturday the 7th of February and conclude at 3:00pm on Sunday the 8th of February. Land Competitors will be able to fish through the night.

The weigh station closes at 5:30pm. Closing time is FINAL. Starting and finishing times can be changed at the organizer's discretion for whatever reason.

5. All fish submitted for weighing in must be entire – no gutting except for Kingfish, Kahawai and Tuna which must be bled. All tags to be worn/carried by each individual angler and displayed at fish weigh-in.
6. Prizes will be awarded for the following species: - Snapper, Kingfish, Groper, Terakihi, Blue Cod, Trevally, Gurnard and Tuna for the both the Adult and Junior Water Competitions and Kingfish, Moki, Snapper, Kahawai, Gurnard, Trevally and Blue Cod for the Adult and Junior Land Competitions.
7. In the event of a tie, the first fish submitted will be the winner. All fish submitted for weighing will become the property of the Petone Working Men's Club and will be auctioned on both days soon after the final measuring.
8. Any angler that has fish taken by MPI or not complying with MFish regulations or daily bag limits will result in automatic disqualification from the competition and all prizes.

Any vessel where an angler has been disqualified will result in the whole vessel being disqualified.

Cancellation of either day is at the organizers discretion, no correspondence shall be entered into

9. Prize giving will take place on the final day of fishing after the conclusion of the fish auction.
10. Prizes cannot be redeemed for cash under any circumstances. All prizes must be claimed within ONE month of prize giving or on terms set out by the Organisers.
11. Should a major category prize (1st, 2nd or Average Weight) not have a winner, then the prize shall be given away by random draw. The prize winner shall be drawn from all competitors within the prizes competition who haven't won a major prize, e.g The Water Competitions Snapper prize shall only be drawn from competitors in the Water competition who haven't won a major prize. Competitors in the Land competition would not be eligible.

Competitors do not need to be on site when the draw is made. If a competitor is not on site, they will be contacted to arrange pickup of the prize.

12. Any cancellation will be posted on the Petone Charity Fishing Competitions facebook page: <https://www.facebook.com/CharityFishing> or Gordon can be contacted on 027 318 1959 as a last resort.

If both Saturday and Sunday are unsuitable for fishing then the prizegiving will be held on Sunday the 8th of February at 6:00pm and all prizes shall be given away as lucky anglers.

13. Any angler entering that is under the age of 14 as of 1st of February 2026 will be entered into the Junior category of the respective competition entered. No exceptions.

14. SAFETY

- a. All vessels must carry 2 forms of operational mobile communication, VHF Radio (hand-held VHF is okay) and cellphone. One approved Life Jacket per person and one current hand-held flare, and/or 406mhz EPIRB.
No exceptions – this is a competition requirement.
- b. All vessels in the competition must monitor CH 14 repeater.
CH2
- c. (04) 568 5404 or 027 318 1959 - Competition HQ - can be used as a last resort if radio contact fails.
- d. Distress safety calling channel in the first instance is CH 16.
Failing that CH 62 or CH 71
- e. All vessels must be operationally compliant
- f. In addition to the mandatory equipment stated above, it is strongly recommended that the following items are carried on each vessel:
 - More than 1 working Mobile Phone (Boats)
 - Working Navigation lights
 - First Aid Kit
 - Anchor and Warp
 - Bilge pump
 - Bucket
 - Paddle(s)
 - Compass
 - Knife
 - Fire Extinguisher
 - Spare fuel
 - Torch
 - Emergency tool kit

g. Always take care on rocks and dangerous surfaces.

Special thanks to the Wellington & Mana Coastguard for the use of their repeater. Please remember Coastguard has priority over this channel.

15. Anglers will be scrutinized at the Club's discretion.
16. Any abuse of officials/helpers will result in disqualification from the competition.

Boating and other water sports can be dangerous and life threatening activities. Skippers are responsible for ensuring the safety of their own boats, crew and boating equipment. All entrants and boat owners participate at their own risk. The Petone Working Men's Club, its partners, its employees, officers, sponsors and volunteers (together "the organizers") accept no responsibility in any respect for personal injury, loss or damage to property arising out of or in connection with the Competition, regardless of cause. Each entrant releases the organizers to the fullest extent permitted by law from all claims or demands of any kind and from all liability which may arise in respect of any incident associated with the Competition. Each entrant also agrees not to bring any action, claim or demand against the organizers in respect of the Competition and agrees to indemnify the organizers for all costs, claims, demands, expenses (including full legal expenses) arising in respect of their participation in the Competition.

Scrutineering of anglers by the organizers is not to be taken as an endorsement as to the safety of said angler, their equipment or the experience of their crew.

The holding of the Competition does not constitute an endorsement by the organizers that the weathers or sea conditions are suitable for the boats and/or entrants.

The Competition is held in the spirit of amateur fishing and fair competition. If, in the opinion of the Petone Charity Fishing Competition Committee, competitors have breached the spirit of the Competition the Committee reserves the right to exclude competitor(s). The Committee's decision is final.

17. **Prizepool**

The organisers reserve the right to alter or reduce the value of the prize pool due to any event out of control of the organizers (Force Majeure) whether in respect to supply of prizes or otherwise.

18. **Disputes**

Any competitor that wishes to dispute the results of the contest must do so within 7 days of the competitions completion.

To do so, the competitor must fill out a Dispute form supplied by the competition and return it to the Petone Club either via hand delivery or via email to entries@charityfishing.co.nz with in the 7 days (Sunday 15th February 2026)

The dispute will be investigated and if found to be upheld then the competition will aim to rectify the situation to the best of its ability.

19. **Lucky Angler Prizes**

We give away several Lucky Angler prizes across the weekend. To win a prize then the winner must be entered into the competition and at the Petone Club when the prize is drawn. The winner must be the person to collect the prize.

If a winner is drawn but is not at the Petone Club and/or does not claim their prize then their number will be removed from the draw.

Alterations to these conditions is at the Organisers discretion.

20. **Junior Competition Rules**

These rules are in addition to all other rules.

Junior Water competitors cannot skipper vessels.

Junior Water competitors must be supervised on vessels with the proper safety equipment as per rule 14.

Junior Land competitors must be supervised while fishing on land.

LAND COMPETITION RULES

These rules are in addition to the standard rules and will supercede them if a conflict arises.

1. Land Competition fishing grounds are set at just north of Kapiti Island to Cape Paliser as designated in the contest map.
2. The Land Competition will start at 5:00am on Saturday the 7th of February and conclude at 3:00pm on Sunday the 8th of February. Land Competitors will be able to fish through the night.

All fish must be entered into the contest by 5:30pm on Sunday the 8th of February.

3. 2 Rod maximum per angler with a maximum of 3 hooks per rod.
4. All fish are to be put on salt ice asap to ensure best quality when entered.
5. All fish caught will need to be photographed as per the the measuring mat requirements on the following page.

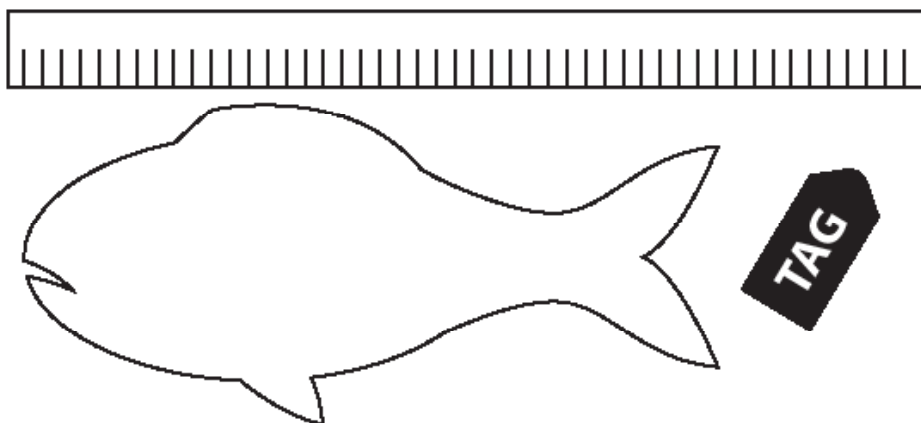
Measuring mats will be supplied by the contest organisers.

Any fish caught that have not been photographed and sent to the contest organisers will not be eligible for entry into the contest.

MEASURING MAT REQUIREMENTS

All fish entered into the Land Competition will need to be photographed and sent to us. This is to ensure that the fish has been well taken care of and will be in good condition for auction.

1. Place your fish alongside the measuring mat.
2. Place your contest tag next to the fish.
3. Photograph the fish on your mobile phone. If you can time stamp the photo then it will help. If you can't timestamp the photo then please tell us what time the fish was caught in your text or email.
4. Send the photo to us either by text to 022 367 3750, via message to our facebook page or email at entries@charityfishing.co.nz



Any mobile or data charges are the responsibility of the entrant.

WATER COMPETITION PRIZES

ADULT COMPETITION

GROPER

First

Forcemaster 9000 A Electric Reel
Xitus Pro 5'6" 50-80lb 2pce B/Butt Rod
Power Pro Spectra

Valued at
\$2360

Second

TLD 50 A Two Speed Reel
Xitus Pro 5'6" 1pce Boat 15/24kg Rod
Power Pro Spectra Hi-Vis YLW 50lb One Shot

Valued at
\$860

Average Weight

Shinmano Insulated Fish Bag

Valued at
\$230

KINGFISH

First

Talica 12 Reel
Extraction 5'5" 2pce Jig O/H PE8 300-400G Rod
Kairiki 8 Multi 80lb/36.3kg 0.42mm 300m

Valued at
\$1060

Second

Torium 20PG A Reel
Extraction 5'5" 2pce Jig O/H PE6 200-300g Rod
Kairiki 8 Multi 80lb/36.3kg 0.42mm 300m

Valued at
\$710

Average Weight

Shinmano Insulated Fish Bag

Valued at
\$230

SNAPPER

First

Talica 10 Reel
Carbolite 7'2pce O/H 10-15kg Rod
Kairiki 8 Mantis Green 50lb/22.7kg 0.315mm

Valued at
\$1100

Second

Torium 20HG Reel
24 Shadow X 6'3" 1pce 10-15kg Rod
Kairiki 8 Mantis Green 50lb/22.7kg 0.315mm

Valued at
\$640

Average Weight

Shinmano Insulated Fish Bag

Valued at
\$230

TERAKIHI

First

Trinidad 16 Reel
Carbolite 7'2pce O/H 10-15kg Rod
Kairiki 8 Mantis Green 50lb/22.7kg 0.315mm

Valued at
\$1200

Second

Torium 16HG A Reel
24 Shadow X 6'3" 1pce 10-15kg Rod
Kairiki 8 Mantis Green 50lb/22.7kg 0.315mm

Valued at
\$640

Average Weight

Shinmano Insulated Fish Bag

Valued at
\$230

TREVALLY

First

Trinidad 16 Reel
Carbolite 7'2pce O/H 10-15kg Rod
Kairiki 8 Mantis Green 50lb/22.7kg 0.315mm

Valued at

\$1200

Second

Torium 16HG A Reel
24 Shadow X 6'3" 1pce 10-15kg Rod
Kairiki 8 Mantis Green 50lb/22.7kg 0.315mm

Valued at

\$640

Average Weight

Shinmano Insulated Fish Bag

Valued at

\$230

BLUE COD

First

Trinidad 16 Reel
Carbolite 7' 2 Piece O/H 10-15kg Rod
Kairiki 8 50lb Braid

Valued at

\$1200

Second

Torium 16HG Reel
Shadow X 7' 1 Piece O'H Rod
Kairiki 8 50lb Braid

Valued at

\$640

Average Weight

Shinmano Insulated Fish Bag

Valued at

\$230

GURNARD

First

Trinidad 16 Reel

Carbolite 7'2pce O/H 10-15kg Rod

Kairiki 8 Mantis Green 50lb/22.7kg 0.315mm

Valued at

\$1200

Second

Torium 16HG A Reel

24 Shadow X 6'3" 1pce 10-15kg Rod

Kairiki 8 Mantis Green 50lb/22.7kg 0.315mm

Valued at

\$640

Average Weight

Shinmano Insulated Fish Bag

Valued at

\$230

TUNA

First

23 Talica 16 Two Speed Reel

Xitus Pro 5'6" 50-80lb 2pce BB/Butt Rod

Kairiki 8 Mantis Green 80lb/36.3kg 0.42mm 300m

Valued at

\$1360

Second

Speedmaster 16 Two Speed Reel

Status Bluewater 5'8" 1pce 15kg R/T S/Butt Game Rod

Kairiki 8 Mantis Green 80lb/36.3kg 0.42mm 300m

Valued at

\$810

Average Weight

Shinmano Insulated Fish Bag

Valued at

\$230

MOST SPECIES ENTERED

Quest Lounge Room 4.0

Valued at

\$500

JUNIOR COMPETITION

GROPER

First

TLD 30 A Two Speed Reel

Status Bluewater 5'8" 1pce 15kg R/T S/BUTT

Game Rod

Power Pro Spectra Hi-Vis YLW 50lb 0.36mm 650Yd

One Shot

Valued at

\$950

Average Weight

Shinmano Insulated Fish Bag 700mm

Valued at

\$190

TUNA

First

Speedmaster 16 Two Speed Reel

Status Bluewater 5'8" 1pce 15kg R/T S/BUTT

Game Rod

Kairiki 8 Mantis Green 80lb/36.3kg 0.42mm 300m

Valued at

\$830

Average Weight

Shinmano Insulated Fish Bag 700mm

Valued at

\$190

KINGFISH

First

Speedmaster 12 Two Speed Reel
Extraction 5'5" 2pce Jig O/H PE6 200-300g Rod
Kairiki 8 Multi 80lb/36.3kg 0.42mm 300m

Valued at

\$790

Average Weight

Shinmano Insulated Fish Bag 700mm

Valued at

\$190

SNAPPER

First

Tekota 500HG A REEL
24 Shadow X 6'3" 1pce 10-15kg Overhead Rod
Kairiki 8 Multi 50LB/22.7kg 0.315mm 300m

Valued at

\$680

Average Weight

Shinmano Insulated Fish Bag 700mm

Valued at

\$190

TARAKIHI

First

Tekota 500HG A REEL
24 Shadow X 6'3" 1pce 10-15kg Overhead Rod
Kairiki 8 Multi 50LB/22.7kg 0.315mm 300m

Valued at

\$680

Average Weight

Shinmano Insulated Fish Bag 700mm

Valued at

\$190

TREVALLY

First

Tekota 500HG A REEL

24 Shadow X 6'3" 1pce 10-15kg Overhead Rod

Kairiki 8 Multi 50LB/22.7kg 0.315mm 300m

Valued at

\$680

Average Weight

Shinmano Insulated Fish Bag 700mm

Valued at

\$190

BLUE COD

First

Tekota 500HG A REEL

24 Shadow X 6'3" 1pce 10-15kg Overhead Rod

Kairiki 8 Multi 50LB/22.7kg 0.315mm 300m

Valued at

\$680

Average Weight

Shinmano Insulated Fish Bag 700mm

Valued at

\$190

GURNARD

First

Tekota 500HG A REEL

24 Shadow X 6'3" 1pce 10-15kg Overhead Rod

Kairiki 8 Multi 50LB/22.7kg 0.315mm 300m

Valued at

\$680

Average Weight

Shinmano Insulated Fish Bag 700mm

Valued at

\$190

MOST SPECIES

Shimano Tackle Bag

Valued at

\$155

LAND COMPETITION PRIZES

ADULT COMPETITION

KINGFISH

First

Ultegra XR 14000 XTD Surf Reel
Exvance 14'6" 3pce 10-15kg 3-6oz Medium Heavy
Surf Spin Rod
Exage + 300m 20lb/9.1kg

Valued at

\$1120

Average Weight

Shimano Backpack & Tackle Box

Valued at

\$170

MOKI

First

Big Baitrunner 14000 XT LC Surf Reel
Dynaflare 14'6" 3pce 10-15kg 3-6oz Medium
Heavy Surf Spin Rod
Exage + 300M 20lb/9.1kg

Valued at

\$750

Average Weight

Shimano Backpack & Tackle Box

Valued at

\$170

SNAPPER

First

Big Baitrunner 14000 XT LC Surf Reel
Dynaflare 14'6" 3pce 10-15kg 3-6oz Medium
Heavy Surf Spin Rod
Exage + 300M 20lb/9.1kg

Valued at

\$750

Average Weight

Shimano Backpack & Tackle Box

Valued at

\$170

KAHAWAI

First

Big Baitrunner 14000 XT LC Surf Reel
Dynaflare 14'6" 3pce 10-15kg 3-6oz Medium
Heavy Surf Spin Rod
Exage + 300M 20lb/9.1kg

Valued at

\$750

Average Weight

Shimano Backpack & Tackle Box

Valued at

\$170

GURNARD

First

Big Baitrunner 14000 XT LC Surf Reel
Dynaflare 14'6" 3pce 10-15kg 3-6oz Medium
Heavy Surf Spin Rod
Exage + 300M 20lb/9.1kg

Valued at

\$750

Average Weight

Shimano Backpack & Tackle Box

Valued at

\$170

TREVALLY

First

Big Baitrunner 14000 XT LC Surf Reel
Dynaflare 14'6" 3pce 10-15kg 3-6oz Medium
Heavy Surf Spin Rod
Exage + 300M 20lb/9.1kg

Valued at

\$750

Average Weight

Shimano Backpack & Tackle Box

Valued at

\$170

BLUE COD

First

Big Baitrunner 14000 XT LC Surf Reel
Dynaflare 14'6" 3pce 10-15kg 3-6oz Medium
Heavy Surf Spin Rod
Exage + 300M 20lb/9.1kg

Valued at

\$750

Average Weight

Shimano Backpack & Tackle Box

Valued at

\$170

MOST SPECIES ENTERED

Quest Lounge Room 4.0

Valued at

\$500

JUNIOR COMPETITION

KINGFISH

First

Ultegra 14000 XSE Surf Reel
Exvance 13'6" 3pce 10-15kg 3-6oz Medium Heavy
Surf Rod
Exage + 300m 20lb/9.1kg

Valued at

\$800

Average Weight

Shimano Backpack & Tackle Box

Valued at

\$170

MOKI

First

Baitrunner 12000 D Spin Reel
Dynaflare 9'6" 3pce 10-15kg Medium Heavy Rock
Spin Rod
Exage + 300m 20/9.1kg

Valued at

\$530

Average Weight

Shimano Backpack & Tackle Box

Valued at

\$170

SNAPPER

First

Baitrunner 12000 D Spin Reel
Dynaflare 9'6" 3pce 10-15kg Medium Heavy Rock
Spin Rod
Exage + 300m 20/9.1kg

Valued at
\$530

Average Weight

Shimano Backpack & Tackle Box

Valued at
\$170

KAHAWAI

First

Baitrunner 12000 D Spin Reel
Dynaflare 9'6" 3pce 10-15kg Medium Heavy Rock
Spin Rod
Exage + 300m 20/9.1kg

Valued at
\$530

Average Weight

Shimano Backpack & Tackle Box

Valued at
\$170

GURNARD

First

Baitrunner 12000 D Spin Reel
Dynaflare 9'6" 3pce 10-15kg Medium Heavy Rock
Spin Rod
Exage + 300m 20/9.1kg

Valued at
\$530

Average Weight

Shimano Backpack & Tackle Box

Valued at
\$170

TREVALLY

First

Baitrunner 12000 D Spin Reel
Dynaflare 9'6" 3pce 10-15kg Medium Heavy Rock
Spin Rod
Exage + 300m 20/9.1kg

Valued at
\$530

Average Weight

Shimano Backpack & Tackle Box

Valued at
\$170

BLUE COD

First

Baitrunner 12000 D Spin Reel
Dynaflare 9'6" 3pce 10-15kg Medium Heavy Rock
Spin Rod
Exage + 300m 20/9.1kg

Valued at
\$530

Average Weight

Shimano Backpack & Tackle Box

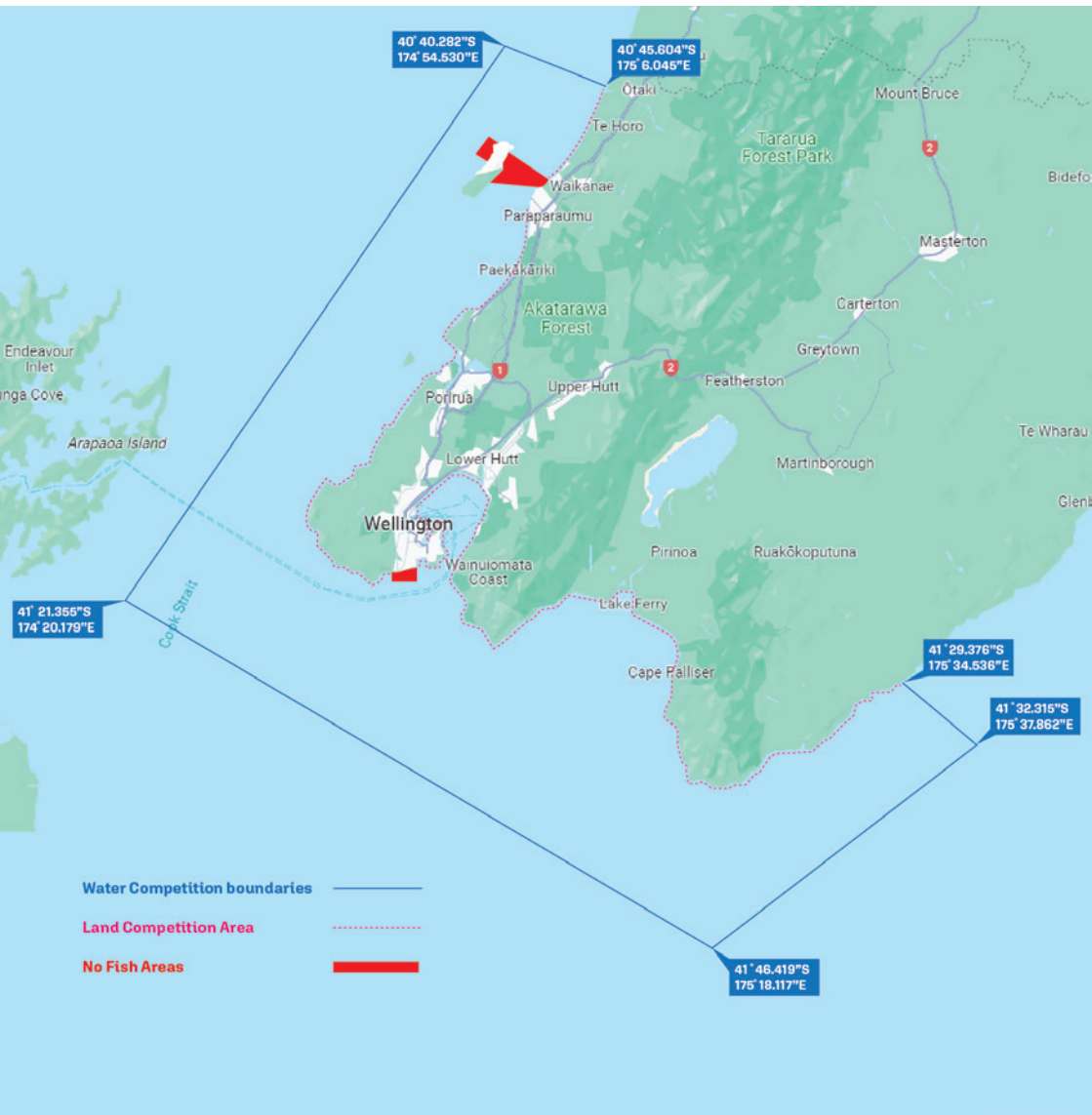
Valued at
\$170

MOST SPECIES

Shimano Tackle Bag

Valued at
\$155

CONTEST MAP



North boundary - Otaki River mouth

40°45.604"S - 175°6.045"E out to 40°40.282"S - 174°54.530"E

Western Bounday - Cook Strait

41°21.355"S - 174°20.179"E

Southern Boundary - Cook Strait

41°46.419"S - 175°18.177"E

Eastern Bounry - Te Awaiti River Mouth

41°29.376"S - 175°34.536"E out to 41°32.315"S - 175°37.862"E

BRIEFING

Competitors will be required to attend the briefing at the Petone Working Men's Club on Friday 6th February 2025, commencing 7:00pm sharp. For those not yet registered, registrations will be accepted between 6:00pm and 8:00pm

Registrations will pause while the briefing is underway.

LIMITS

Please note as per MPI's regulations there is a bag limit of 20 fish per day. Please use the following table for more information about limits on number and size for each category.

Category	Limit per day	Minimum fish length
Groper	2	
Kingfish *	3	75cm
Snapper *	10	27cm
Terakihi	15	25cm
Blue Cod *	10	33cm
Gurnard *	15	25cm
Trevally *	15	25cm
Moki	5	40cm
Kahawai	5	-
Tuna	2	

* Water and Land competitions.

TIMETABLE

FRIDAY 6th FEBRUARY

Briefing: 7:00pm
Registrations open between
6:00pm and 8:00pm.

SATURDAY 7th FEBRUARY

Fishing: 5:00am to 3:00pm
Weigh in: 3:30pm to 5:30pm
Filleting from 5:00pm
Auction: 4:00pm

SUNDAY 8th FEBRUARY

Fishing: 5:00am to 3:00pm
Weigh in: 3:30pm to 5:30pm
Auction: 4:00pm
Prizegiving: from 6:00pm

Times may change at the discretion of the organizer

AUCTION

From 4:00pm on both Saturday the 7th and Sunday the 8th of February a Fish Auction shall be held where fish caught during the day are auctioned off.

It is illegal to buy, sell or swap recreationally caught seafood.
All fish bought will need to be paid and signed for on the day.

SPONSORSHIP

Each year we have a raft of top sponsors come on board to support the competition.

If you're interested in helping out with either cash sponsorship or sponsorship in kind, then get a hold of us. We will display your logo on our website, our facebook page and the internal advertising screens here at the Petone Club, so you will get a wide range of exposure. There are also options to have your business displayed on the weekend of the contest as well.

To find out more either email us on sponsorship@charityfishing.co.nz



Proudly Supporting

Heart Kids NZ
Tamariki Manawa Māia

We are the only national organisation in Aotearoa NZ that provides free, lifelong care and support for children, teens, adults and whānau impacted by childhood heart conditions.

News of a childhood heart condition can turn a family's life upside down. But no one has to face that journey alone. We walk alongside families through diagnosis and treatment, offering support, knowledge and guidance. We make sure that our heart families have this support freely available during hospital stays and at home in the community.

Our family support team are dedicated to being there for everyone who navigates a heart journey. Often, families are faced with separation, loneliness, isolation, financial hardship, stress and uncertainty about the future. Our team of trained, passionate family support taituarā are based around Aotearoa NZ, so families are supported when and where they need it most.



Coastguard is the charity saving lives at sea. We're on a mission to help Kiwis get the best out of their time on the water, safely and with confidence. Last year Coastguard's 1,963 volunteers gave their time to help bring nearly 8,000 Kiwis back home safely to dry land - from Cape Rēinga to Bluff and across the coastlines, major rivers and lakes of Aotearoa.

We save lives by teaching Kiwis to make the most of our waters through our education programmes and community initiatives, by providing critical marine communications infrastructures and safety and information services.

None of this would be possible without the financial support we receive from our funders, partners, members and donors who generously give to Coastguard so that our volunteers can continue to be there when Kiwis need them most.

